



MONTHLY MEMBERSHIP PROGRESS REPORT

District 128

Results as of: 4/30/2015

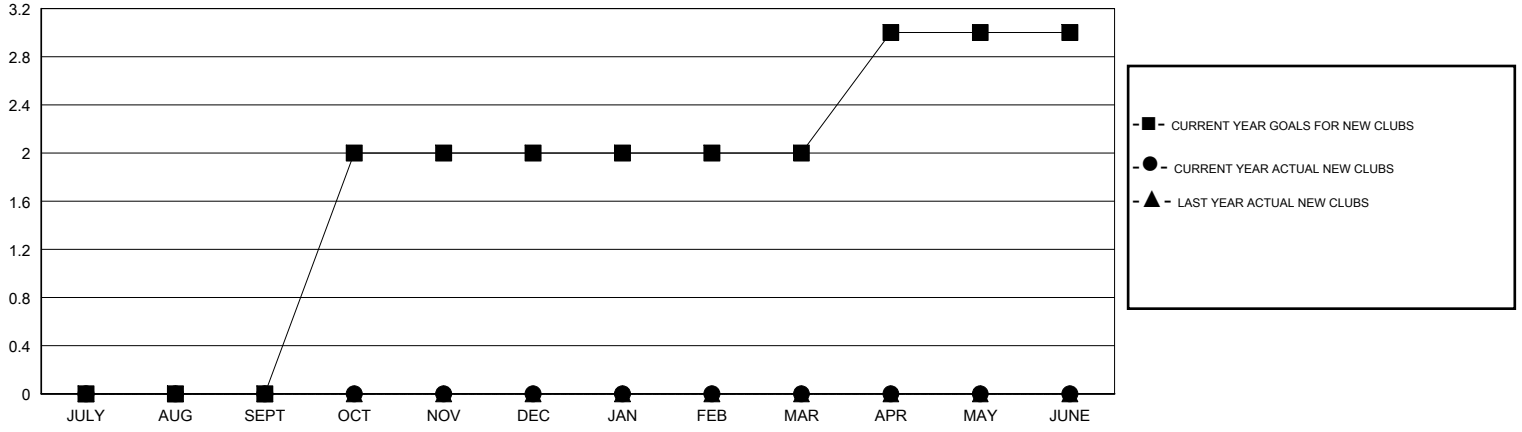
GMT: Elisabeth Haderer

LOCATION ISRAEL

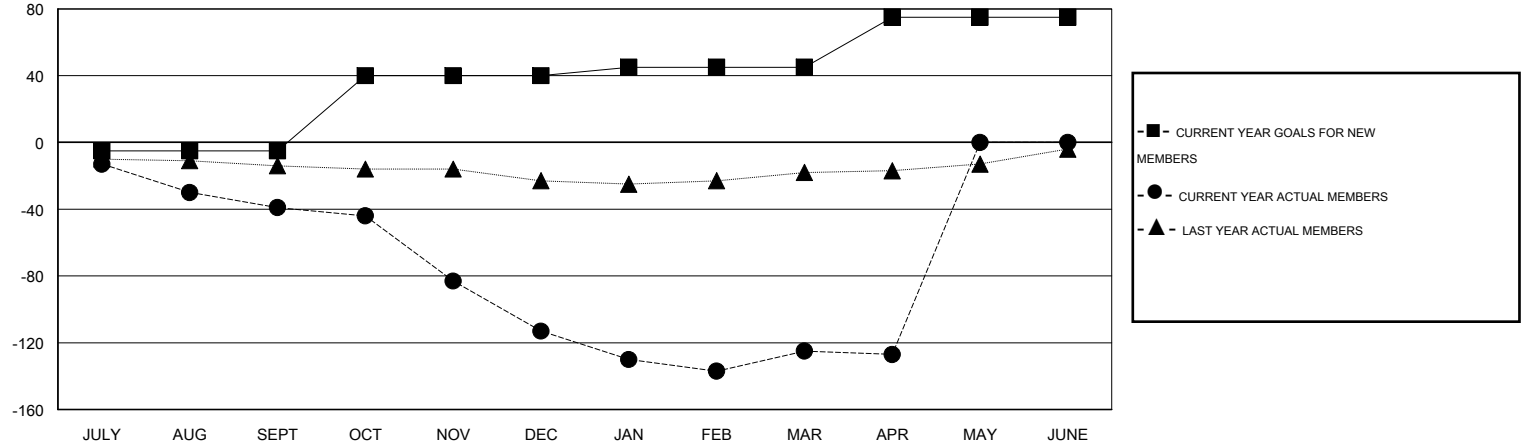
GMT CA 4

Clubs					Members				
RESULTS FOR 2014-2015					RESULTS FOR 2014-2015				
QUARTER	NEW CLUB GOAL	NEW CLUBS	DROPPED CLUBS	NET GAIN/LOSS	QUARTER	NEW MEMBER GOAL	CHARTER AND NEW MEMBERS ADDED	DROPPED MEMBERS	NET GAIN/LOSS
JULY/AUG/SEPT	0	0	0	0	JULY/AUG/SEPT	-5	0	39	-39
OCT/NOV/DEC	2	0	3	-3	OCT/NOV/DEC	45	9	83	-74
JAN/FEB/MAR	0	0	0	0	JAN/FEB/MAR	5	16	28	-12
APR/MAY/JUNE	1	0	0	0	APR/MAY/JUNE	30	1	3	-2

GOALS AND ACTUAL NEW CLUBS CUMULATIVE



GOALS AND ACTUAL MEMBERS CUMULATIVE



DROPPED CLUBS: 3	9 CLUBS OF 33 ADDED 1 OR MORE NEW MEMBERS	<u>GENDER DISTRIBUTION</u>	
<u>DROPPED MEMBERS</u>		MALE	393 (45.49%)
DECEASED	1	FEMALE	471 (54.51%)
CLUB CANCELLED	30	<u>FAMILY UNIT MEMBERS</u> 546	
OTHER	122	<u>HEAD OF HOUSEHOLD</u> 273	
TOTAL	153	<u>NON-HEAD OF HOUSEHOLD</u> 273	

[CLICK HERE FOR HEALTH ASSESSMENT DATA](#)